



# SOFTSUITCASE



## SABRE

SoftSuitCase 2008 is a Complete Mid- and BackOffice system specifically designed for the Travel Industry by IT professionals that have been involved in the travel business for more than 20 years.

This booklet describes how Sabre configured for use in SoftSuitCase

# BETA!



# TravelOffice

# Mid- og Backoffice

Are you looking for a good mid- and backoffice for your agency?

The advertisement features a large, stylized gear graphic in the background. The top left section is white and contains the 'SUITS CASE' logo with a blue circular icon above it, and the text 'Travel Automation' below. The top right section is dark blue with a small Danish flag icon and two paragraphs of text in Danish. The bottom center features a photograph of a person's legs standing on a floor covered with scattered papers and a book. The bottom left corner displays the 'Microsoft Partner Network' and 'IATA' logos. The bottom right corner features a globe icon and the 'TravelOffice' logo.

**SUITS CASE**  
Travel Automation

SoftSuitCase 2008 er et komplet Mid- og BackOffice system specielt udviklet til Rejsebranchen af it-fagfolk, der har været involveret i rejsebranchen i mere end 20 år.

Det integreres problemfrit med SoftSuitCase-Online, vores online booking system, og kan samtidigt integreres med flere eller alle CRS (GDS) som Amadeus, Galileo (Apollo), Sabre og Worldspan.

Microsoft  
Partner Network  
IATA

 **TravelOffice**

Contact TravelOffice for a free demonstration!

## Sabre and Sabre Red

Now more than 120.000 agents are experiencing the Sabre Red Workspace. It's an amazing number since Sabre announced there new customizable workspace in June 2010, and every day more users are upgraded. Agents across the globe - in 114 countries so far - are realizing the benefits of this award-winning innovation.

That means they're enjoying simplified navigation. Faster start-up times. Rock-solid stability. Flexible configuration. In short, they're working better, faster and more efficiently.

Sabre recently began rolling out there latest innovation - a new feature of the Red Workspace - graphical view.

We devote thousands of man hours and combined expertise to bring you the best technology in the industry. The Red Workspace is a great example of this technology, and graphical view is just one more way we are helping your business stay ahead.

This manual describes how to set up Sabre and SoftSuitCase so that itinerary, passengers and tickets are automatically transferred between the two systems



### SoftFares 2011 wp

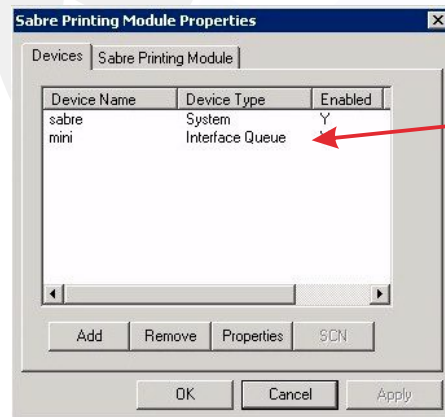
SoftFares are also available in a version for Microsoft and Nokia's new smart-phones coming to Scandinavia in the middle of October.

The program only works if you are already using Soft Fares SL. The program can be downloaded from phone's MarketPlace. Search for Soft Fares. Price is yet unknown, but we expect around EUR 20 per phone.

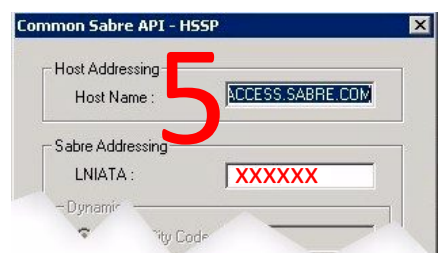
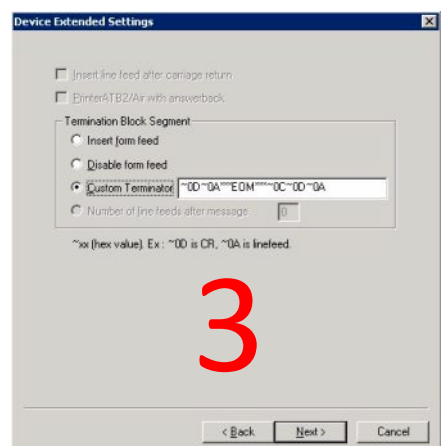
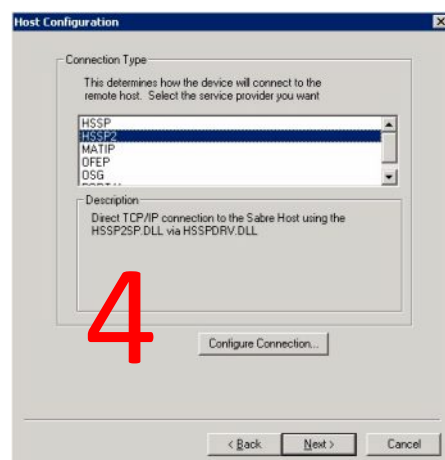
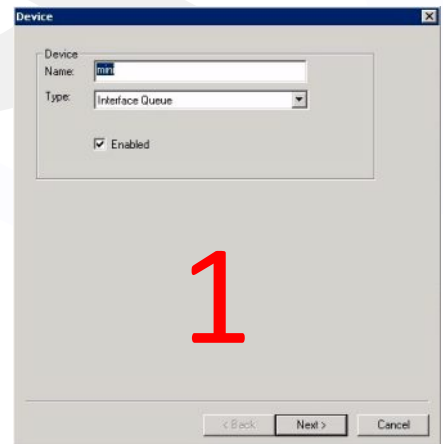
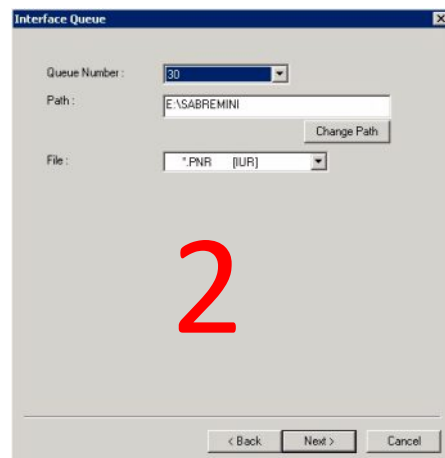
## Setup Sabre Printing Module

If not Sabre Printing Module is installed, this must be installed first. See information received from Sabre, or contact Sabre HelpDisk.

If the program is installed correctly, it is available as a service at the bottom right corner of the PC



If there is not installed a MINI, this must be installed. Press ADD and fill the screens as described below

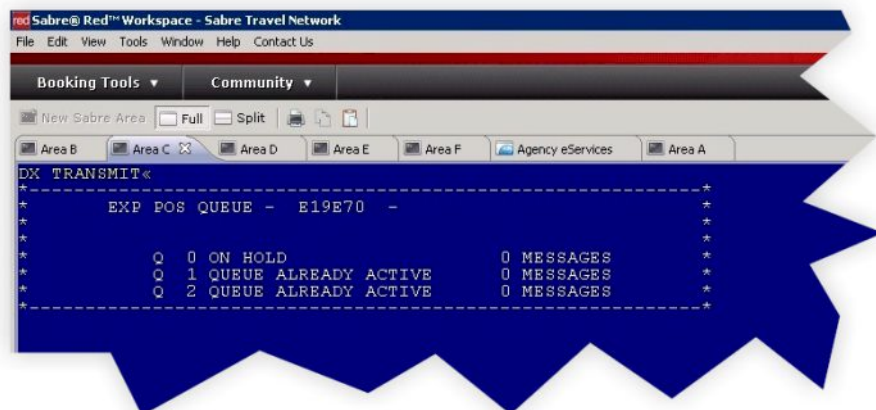


Enter LNIATA address of your MINI, and save and exit.

## Send the MINI file from Sabre

In Sabre Red write the following command:

**DX TRANSMIT**



If you receive a response as described above, is your MINI is ready for use.

If you do not have rights to administer the MINI, you can try the following commands in Sabre:

**HBXXXX (XXXX = Your SignIn)**  
**H/AUTH XXX (XXX = your name)**  
**H/UAT/A-SUBMGR**  
**H/UAT/A-MINOPR**  
**H/DTY9**  
**HE**  
**SI\***  
**DX TRANSMIT**

Once setup is complete, you can start transferring PNR to SoftSuitCase. This is done either by issuing a ticket, or with the following command:  
**DIT**

# Setup PNRreader

## SoftSuitCase PNRreader setup.

When the setup of Sabre is finished, you must setup SoftSuitCase PNRTransfer program.

If you have not already install PNRTransfer must be installed from:  
**[www.softsuitcase.com](http://www.softsuitcase.com)**

Enter the directory on your PC, hcor Sabre MINI deliver files.  
If you want backup files, typed this with backup library

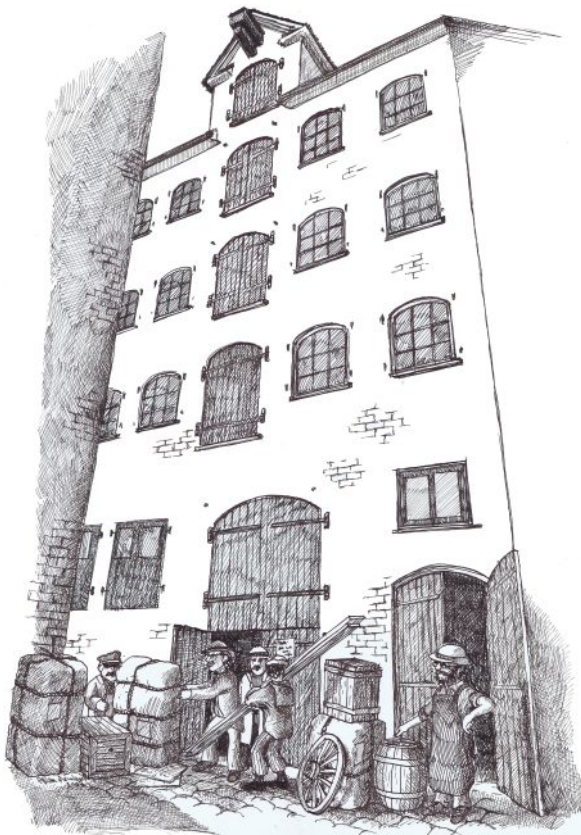
Save and restart your PNRReader

CRS	PNR	First Passenger	Pnr	Departure	Office	No	A
SABRE	MYNINB	GARDE/OLE MR	0	01-01-0001		1	A

Sabre MINI and SoftSuitCase are now ready to use!







SoftSuitCase is based in an old warehouse in the heart of Copenhagen.

Do you want to learn more about our solutions for the travel industry, hosting - or if you have a problem with your computer system. Or do you just want to see our exciting and distinctive rooms are always very welcome to come visit us.

Our courses in Denmark also held in the old warehouse at Nytorv.



## SoftSuitCase 2010

SoftSuitCase 2008 is a Complete Mid- and BackOffice system specifically designed for the Travel Industry by IT professionals that have been involved in the travel business for more than 20 years.

SoftSuitCase can simultaneously integrate with multiple or all CRS (GDS) as Amadeus, Galileo, Sabre and Worldspan.

## SoftOnline 2010

SoftOnline is an integrated online booking system, and a FrontOffice where you can give your customers the opportunity to see and modify travels online and even printing the E-ticket, itinerary, etc.

## PNR Transfer 2010

PNR Transfer reads the PNR from the Amadeus, Worldspan and Sabre, and translate these into a variety of other systems, including C5, Concorde, Microsoft Office, etc.

**Headoffice:**  
Nytorv 7  
1450 Copenhagen K  
Denmark

**Tel.:** +45 33 66 90 90  
**Email:** info@softsuitcase.com

[www.traveloffice.dk](http://www.traveloffice.dk)

**Technical support:**  
+45 33 66 90 99